



## SC(B)9,SCR9,SC(B)10, SCR10 SERIES DRY TYPE TRANSFORMER

### GENERAL

---



SC(B9),SCR9,SC(B)10,SCR10 Resin casting dry type power transformer produced by our company is a new generation of product with low loss and noise. Product complies with standards: IEC726, GB6450 and GB/T10228-1997 S.

The product owns advantage such as low loss and noise, small size, less weight, moistureproof, anti-dirty, crack-proof, withstanding impulse, fireproof, overload capability, smaller partial discharge (less than 10 PC).

It has reasonable structure and convenient operation & maintenance. When the BWK series temperature controlling system is provided for dry type transformer, it has more functions including alarming caused by faults and abnormal temperature, automatic tripping and automatic starting (stopping) fans to ensure its safe operation.

It is applicable to transmission and distribution system, hotel, restaurant, high building, commercial center, stadium, petrochemical factory, metro, station, airport, drilling form in the sea and so on, particular to the places of load center, or the places where require fireproofing specially.



### OPERATION CONDITION

---

1. Max ambient temperature: +40°C
2. Min ambient temperature: -5°C (the lowest storage temperature: -30°C)
3. daily mean temperature: < 30°C annual mean temperature < 20°C
4. We have the ability to supply you the transformer according to your requirements.



## SC(B)9,SCR9,SC(B)10, SCR10 SERIES DRY TYPE TRANSFORMER

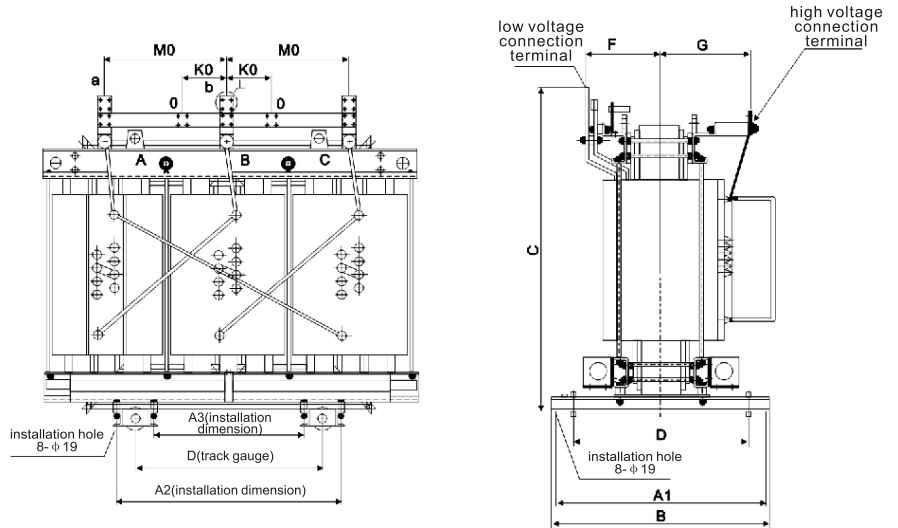


Rated Capacity (kVA)	Voltage combination		Low Voltage	Vector Group	No-load loss(W)	Load Loss (W)	No-Load Current (%)	Impedance Voltage (%)	Insulation EVEL	Track Gauge (mm)	Noise (dB)	Weight (Kg)						
	High voltage (kV)	Tapping Range																
30	6; 6.3; 6.6; 10; 10.5; 11;	$\pm 2 \times$ 2.5%; or $\pm$ 5%	0.4	Yyn0 or Dyn11	210	615	1.2	4	F/F	500×500	42	315						
50					290	900	1.2				42	360						
80					390	1200	1.1				42	415						
100					430	1450	1.1				42	580						
125					500	1610	1.0				44	785						
160					580	1900	1.0				44	820						
200					665	2280	0.9				45	970						
250					780	2490	0.9				45	1090						
315					970	3140	0.8				660×660	46	1250					
400					1100	3600	0.8			820×820	46	1590						
500					1300	4510	0.8			820×820	46	1740						
630					1400	5430	0.8			820×820	47	2110						
630					1360	5510	0.6			820×820	47	2020						
800					1540	6430	0.6			820×820	49	2300						
1000					1870	7500	0.5			1070×1070	49	2830						
1250					2240	8960	0.5			1070×1070	49	3350						
1600					2540	10850	0.5			1070×1070	50	3970						
2000					3330	13360	0.4			1070×1070	50	4800						
2500	4000	15800	0.4	1070×1070	52	5400												
315	35; 38.5	$\pm 2 \times$ 2.5%; or $\pm$ 5%	0.4	Yyn0 or Dyn11	1140	3640	1.3	6	F/F	500×500	47	1570						
400					1330	4680	1.3			500×500	47	1810						
500					1565	5750	1.3			660×660	48	2130						
630					1800	6700	1.2			660×660	48	2450						
800					2110	7940	1.2			660×660	49	3060						
1000					2345	9130	1.2			660×660	49	3720						
1250					2740	11060	1.1			820×820	49	4120						
1600					3130	13440	1.1			820×820	51	5270						
2000					3675	15810	0.9			820×820	51	5990						
2500					4300	18930	0.9			820×820	53	6870						
800					35; 38.5	$\pm 2 \times$ 2.5%; or $\pm$ 5%	0.4			Yd11 or Ynd11	2175	8165	1.2	6	F/F	820×820	49	3360
1000											2580	9500	1.2			820×820	49	4090
1250	3030	11210	1.1	1070×1070				49	4330									
1600	3565	13435	1.1	1070×1070				51	5800									
2000	4110	15810	1.0	1070×1070				51	6590									
2500	4690	18930	1.0	1070×1070				53	7550									
3150	5865	21300	0.9	1070×1070				57	8900									
4000	6805	25610	0.9	1070×1070				57	9520									
5000	8130	30360	0.7	1070×1070				57	12840									
6300	9620	35480	0.7	1070×1070				59	13860									
8000	10500	39340	0.6	1070×1070				59	16100									
10000	12510	48245	0.6	1070×1070				61	2118									
12500	14860	58070	0.5	1070×1070	61	25600												
16000	18000	71760	0.5	1070×1070	61	35700												



# SC(B)9,SCR9,SC(B)10, SCR10 SERIES DRY TYPE TRANSFORMER

## SC9,SCB9, SCR9 SERIES EPOXY RESIN TYPE POWER TRANSFORMER



## 10KV CLASS SCR9, SC9, SCB9 SERIES OUTLINE INSTALLATION DIMENSION

Rated Capacity (kVA)	UK(%)																								
	30	50	80	100	125	160	200	250	315	400	500	630	630	800	1000	1250	1600	2000	2500						
	4									6															
External dimensions	A	800	830	830	920	1050	1090	1150	1180	1230	1360	1360	1410	1470	1510	1600	1680	1740	1900	2010					
	B	350	500	500	500	660	660	660	660	770	960	960	960	960	960	960	1255	1255	1255	1255					
	C	780	930	980	1025	1085	1085	1090	1190	1127	1229	1307	1375	1316	1419	1480	1615	1764	1851	1955					
	D	300	450	450	450	550	550	550	550	660	820	820	820	820	820	820	1070	1070	1070	1070					
	E	710	860	910	940	1015	1005	1020	1064	1096	1098	1175	1215	1163	1223	1283	1381	1534	1611	1735					
	F	255	257	259	262	275	268	279	284	286	289	298	302	304	315	323	330	341	357	397					
	G	274	276	282	289	304	294	308	318	334	337	346	352	354	358	380	380	384	398	401					
	M0	270	280	280	300	345	330	355	375	390	425	435	450	470	485	515	540	560	605	650					
	K	100	100	150	150	150	150	150	150	150	160	160	160	160	180	180	260	260	260	325					
	A3	550	550	550	550	550	550	550	550	660	657	657	657	657	657	657	859	859	859	859					
A2	550	550	550	550	550	550	550	550	660	983	983	983	983	983	983	1281	1281	1281	1281						
A1	300	450	450	450	550	550	550	550	660	910	910	910	910	910	910	1025	1025	1025	1025						
low voltage terminal	Figure one						Figure two $\delta = 4$ A=40			Figure two $\delta = 5$ A=50			Figure two $\delta = 8$ A=60			Figure three $\delta = 8$ A=80 $\phi d = \phi 14$ B=40 a=15		Figure three $\delta = 10$ A=80 $\phi d = \phi 14$ B=40 a=20		Figure three $\delta = 10$ A=10 $\phi d = \phi 18$ B=50 a=25		Figure four A=120 $\phi d = \phi 18$ a=40 al=2		Figure four A=180 $\phi d = \phi 18$ a=60 al=3	



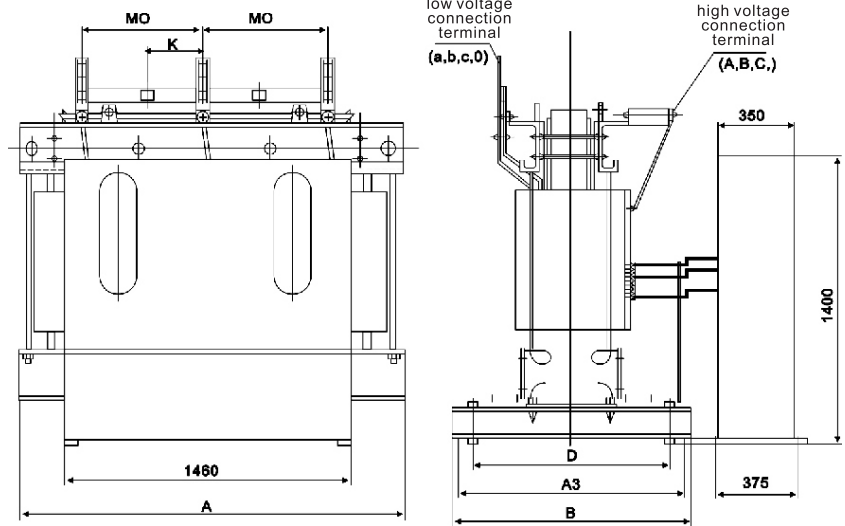


## SC(B)9,SCR9,SC(B)10, SCR10 SERIES DRY TYPE TRANSFORMER

### TECHNICAL SPECIFICATION FOR 10KV ON-LOAD VOLTAGE REGULATING EPOXY RESIN POWER TRANSFORMER



Rated Capacity (kVA)	Voltage combination		Low Voltage	Vector Group	No-load loss(W)	Load Loss (W)	No-Load Current (%)	Impedance Voltage (%)	Insulation EVEL	Track Gauge (mm)	Noise (dB)
	High voltage (kV)	Tapping Range									
315	6; 6.3; 6.6; 10; 10.5; 11;	$\pm 4 \times 2.5\%$	0.4	Yyn0 or Dyn11	935	3155	0.8	4	H level or F level	660×660	45
400					1040	3705	0.8				46
500					1230	4500	0.8				46
630					1405	5360	0.8				47
630					1360	5470	0.6				47
800					1540	6465	0.6				48
1000					1870	7645	0.5	48			
1250					2220	9205	0.5	6		1070×1070	49
1600					2540	10900	0.5				49
2000					3330	13400	0.4				50
2500					4000	15810	0.4	50			



### 10KV SCRZ9, SCZ9, SCBZ9 SERIES OUTLINE DIMENSION DRAWING

Rated capacity(kVA)	315	400	500	630	630	800	1000	1250	1600	2000	2500
UK(%)	4					6					
Size B	1685	1715	1875	1875	1875	1875	1875	1875	2170	2170	2170

Note: the balance dimension is same as non-load voltage regulating dry type transformer



## SC(B)9,SCR9,SC(B)10, SCR10 SERIES DRY TYPE TRANSFORMER

### TECHNICAL SPECIFICATION FOR 35KV SCB SERIES NO-LOAD VOLTAGE REGULATING DRY TYPE POWER TRANSFORMER



Rated Capacity (kVA)	Voltage combination		Low Voltage	Vector Group	No-load loss(W)	Load Loss (W)	No-Load Current (%)	Impedance Voltage (%)	Insulation Evel	Track Gauge (mm)	Noise (dB)
	High voltage (kV)	Tapping Range									
315	35	$\pm 2 \times 2.5\%$ ; or $\pm 5\%$	0.4	Yyn0 or Dyn11	1300	4410	2.0	6	F level	820×820	47
400					1530	5670				820×820	47
500					1800	6975				820×820	48
630					2070	8130	820×820			48	
800					2430	9630	1.8			820×820	49
1000					2700	11070	1.5			820×820	50
1250					3150	13410				1070×1070	50
1600					3600	16290	1070×1070			51	
2000					4230	19170	1070×1070			53	
2500					4950	22950	1.4			1070×1070	54



### TECHNICAL SPECIFICATION FOR 10KV SCR10、SC10、SCB10 SERIES EPOXY RESIN POWER TRANSFORMER

Rated Capacity (kVA)	Voltage combination		Low Voltage	Vector Group	No-load loss(W)	Load Loss (W)	No-Load Current (%)	Impedance Voltage (%)	Insulation Evel	Track Gauge (mm)	Noise (dB)	
	High voltage (kV)	Tapping Range										
30	6; 6.3; 6.6; 10; 10.5; 11;	$\pm 2 \times 2.5\%$ ; or $\pm 5\%$	0.4	Yyn0 or Dyn11	190	560	1.0	4	F/F	500×500	40	
50					270	850	1.0				40	
80					360	1100	0.9				40	
100					400	1370	0.8				41	
125					460	1530	0.75				41	
160					530	1855	0.75				43	
200					605	2100	0.7				43	
250					705	2045	0.7				44	
315					870	3030	0.6				660×660	44
400					970	3480	0.6				820×820	45
500					1150	4260	0.6	820×820		45		
630					1315	5130	0.5	820×820		46		
630					1270	5205	0.5	820×820		47		
800					1485	6070	0.5	820×820		47		
1000					1730	7095	0.4	820×820		48		
1250					2045	8460	0.4	6		1070×1070	48	
1600					2100	10240	0.4	49				
2000					2860	12620	0.3	50				
2500					3460	14995	0.3	50				